

The Eye's Mind:
Visual Imagination,
Neuroscience
and the Humanities
21st-22nd May 2016

Spatial Immersion through Iconographic Cues in Seventeenth-Century Japanese Images

Dr Radu Leca

lecaradu@gmail.com



- 1. Reality vs. Representation**
- 2. Simulation of Spatial Immersion**
- 3. Familiarity with Physical Presence**
- 4. Reality/Representation**

'The picture ... is an event of being ... to be grasped in its ontological structure by starting from such phenomena as that of presentation.'

Hans Gadamer. 1989. *Truth and Method*. p. 144.

To respond to a picture or sculpture "as if" it were real is little different from responding to reality as real.'

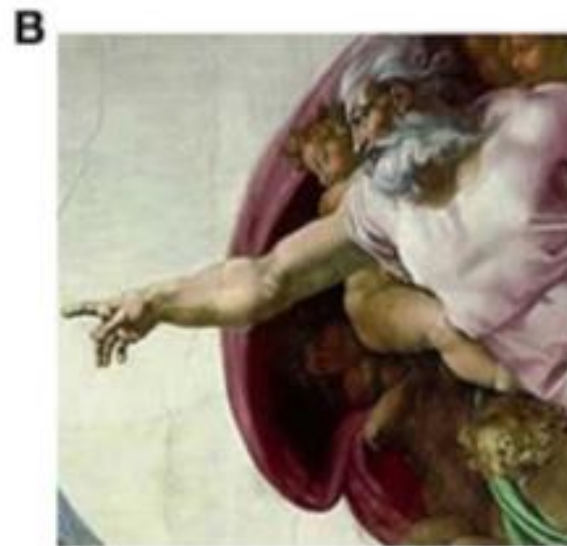
David Freedberg. 1989. *The Power of Images*. p. 438.

"in its original setting, the icon performed through its materiality."

Bissera Pentcheva. 2006. "The Performative Icon." *The Art Bulletin* no. 88 (4): 631



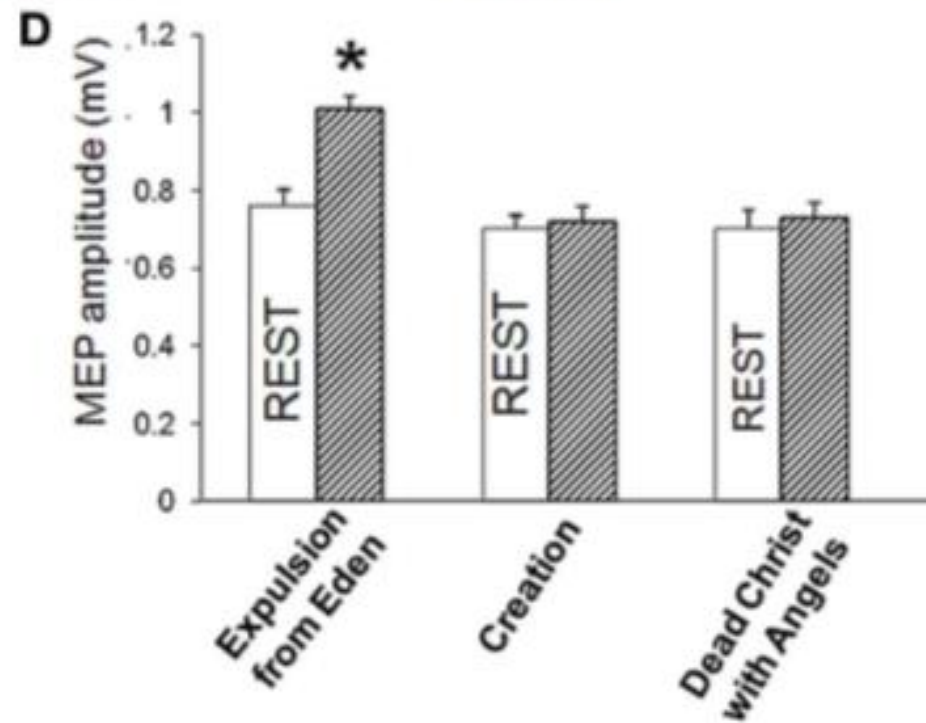
Expulsion from Paradise



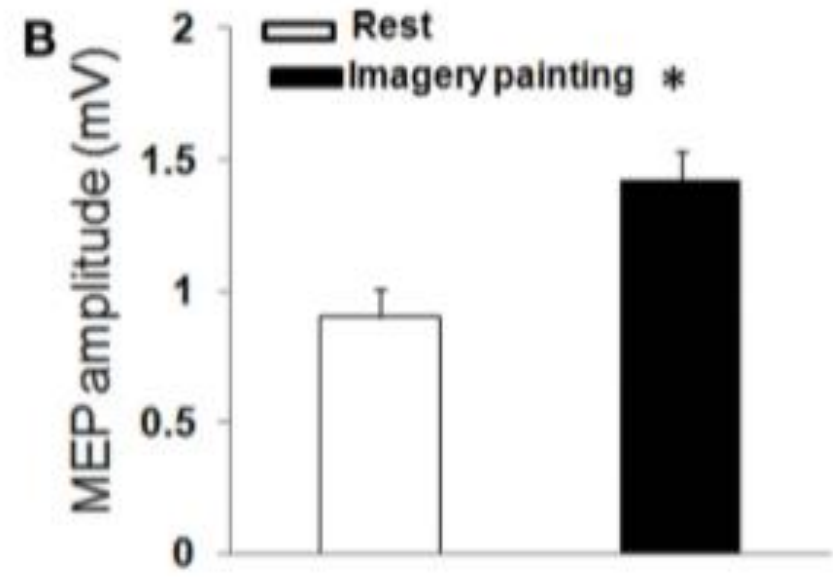
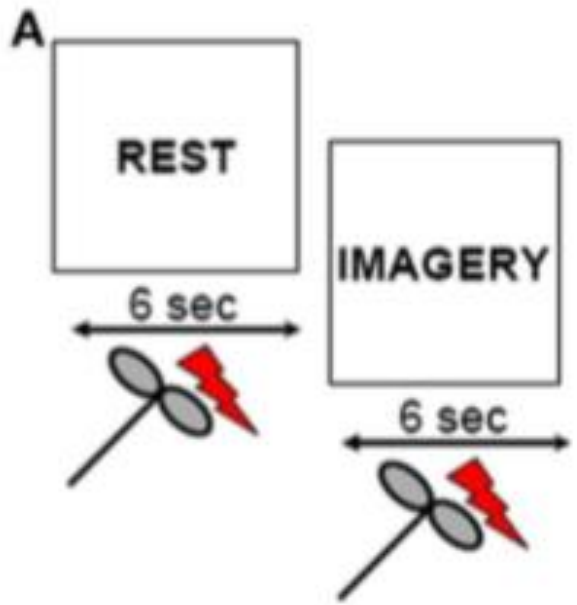
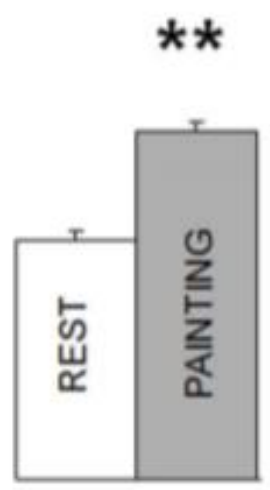
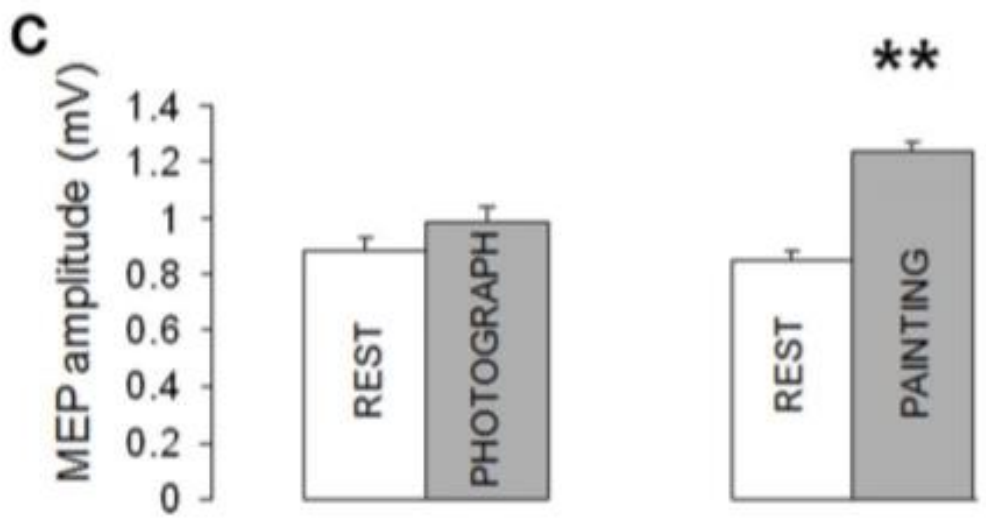
Creation



Dead Christ with Angels



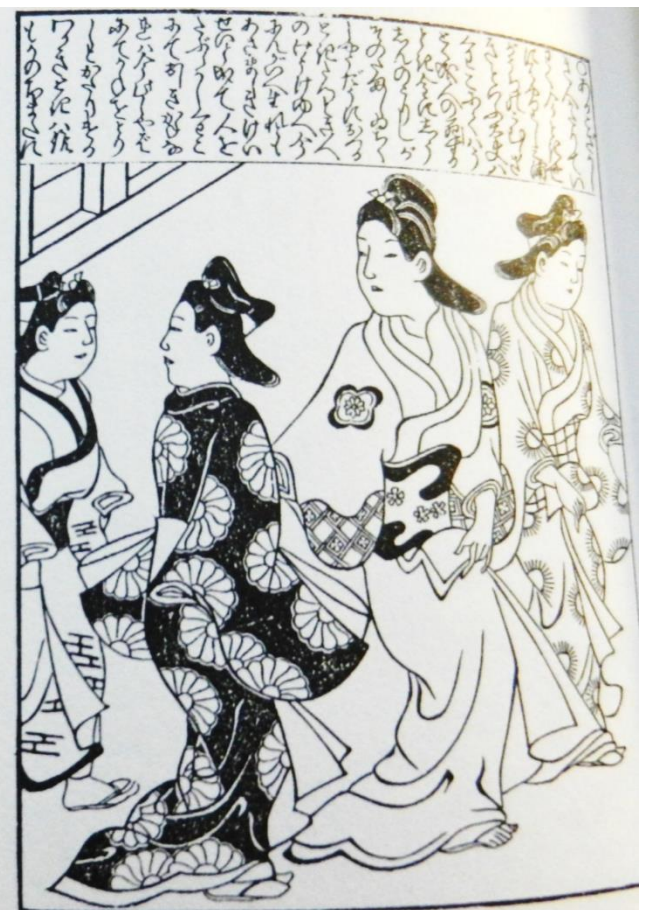
Battaglia, F., S.H. Lisanby, S. H. and D. Freedberg. 2011. "Corticomotor Excitability during Observation and Imagination of a Work of Art." *Frontiers in Human Neuroscience*, 5: 79.



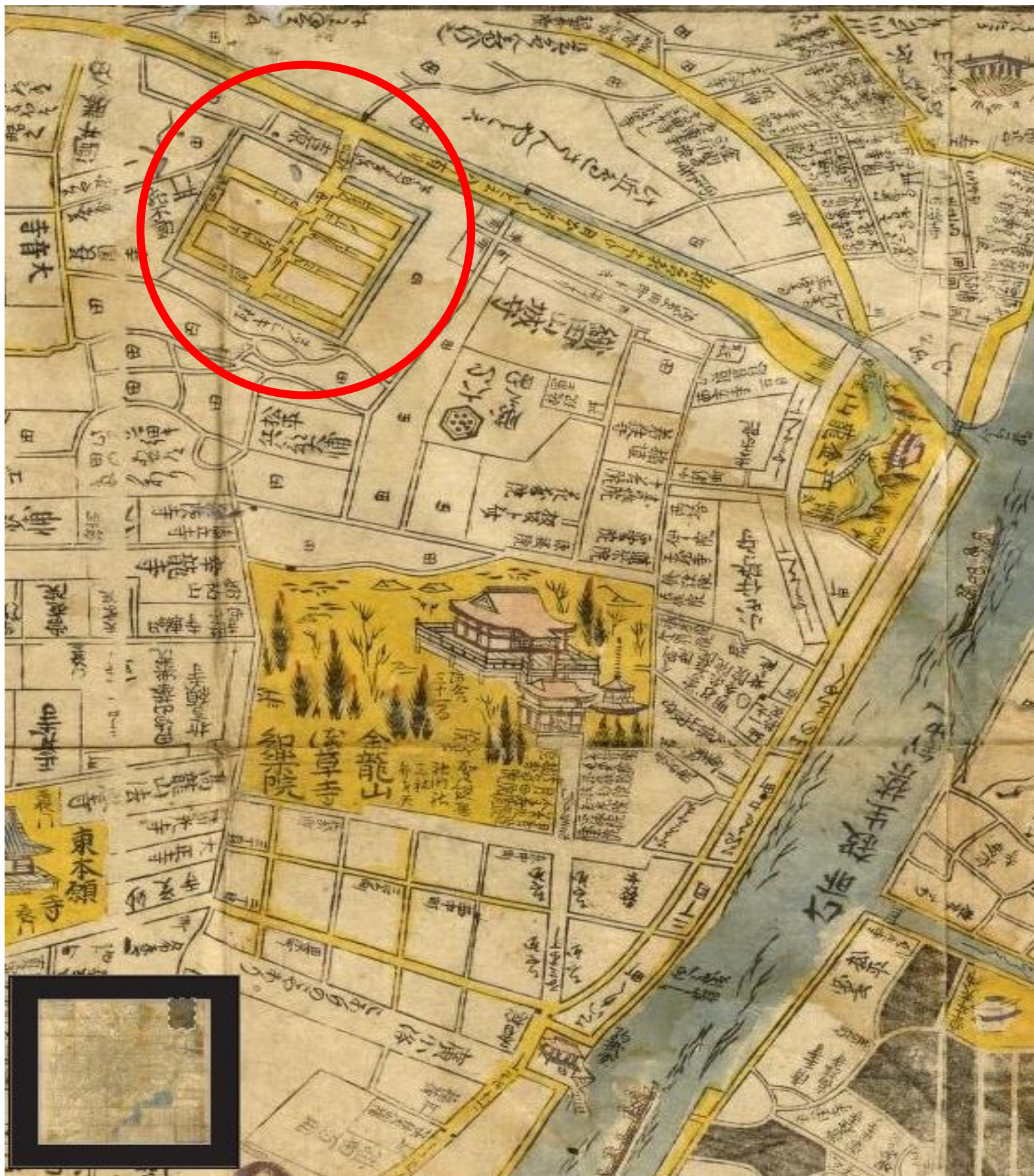
Battaglia, Lisanby and Freedberg 2011



房陽菴川友竹画



Hishikawa
Moronobu,
Beauty
Looking Back,
ink and colour
on silk, 63 by
31 cm,
hanging scroll,
early 1690s.



Ishikawa Ryusen, detail of Asakusa temple and Yoshiwara quarters
From 'A Picture Outline of Edo', hand-colored woodblock print, 1689.



Hishikawa Morohira, Pastimes in Spring and Autumn, ink, colour and gold leaf on paper, 79.1 by 244 cm, pair of folding screens, 1690s



BEDROOM



BOWLING ALLEY



Cleary, Anne M., et al. 2012. "Familiarity from the Configuration of Objects in 3-dimensional Space and Its Relation to Déjà vu: A Virtual Reality Investigation." *Consciousness and Cognition* no. 21 (2): 969-975.



Hishikawa Morohira, Pastimes in Spring and Autumn, ink, colour and gold leaf on paper, 79.1 by 244 cm, pair of folding screens, 1690s



Female attendants on a bridge, detail from Song of Lasting Sorrow by Kano Sansetsu, scroll 1, second length of silk, late 1640s.



Bodhidharma crossing the Yangzi River on a Reed, hanging scroll, ink, colour and gold on silk, 69 by 40.6 cm, 14th c., Museum of Fine Arts Boston.



Hishikawa Morohira, Pastimes in Spring and Autumn, detail of left screen of a pair, gold, ink and colour on paper, 1690s



**Thank you
for your attention!**

lecaradu@gmail.com